

FEEDING THE SYSTEM

Conventional and Aerobic Systems

Sewage Composition

- Hydraulic loading: water carrying waste
- Organic Loading
 - Biological Oxygen Demand (BOD)
 - Total Suspended Solids (TSS)
- Pathogens
- Nutrients
 - Phosphorus
 - Nitrogen
- Chemicals
- Fats, oils, grease



FATS, OILS AND GREASE

Constituent	State at room temperature	Comments
Fats	Solid	Non-toxic to the system, origin – animals, will separate in water
Oils	Liquid	Non-toxic to the system, origin – plants, trouble separating in water
Grease	Solid	Residual material on appliances; solid material on pans/equipment; petroleum products; moisturizers; bath oils; tanning oils; <u>Toxic</u> to the wastewater system

In-Home Businesses / Hobbies



- **Examples of Businesses:**
 - Barber shops
 - Day care
 - Bakery
 - Dog grooming
 - Taxidermy
 - Artist
 - Home photography developing lab

Kitchen

- Dishwasher
 - Hydraulic surges of wastewater
 - Space out loads
 - Organic load
 - Clean/scrape plates
- Garbage Disposal
 - Increases scum by 20%
 - Pumping required 1-2 years sooner
 - Organic matter has not been digested, so it will take longer to break down
 - Small particles take longer to settle



Laundry



- Use should be spread out
 - Returning from vacation
- Liquid soap is recommended
 - Use less
 - Remove risk of fillers in powders
 - Use bleach sparingly
- Consider a high efficiency washer

Bathroom Fixtures



- Garden tubs
 - Use large volumes of water
 - Add hydraulic surges
 - How often it is used?
- Multi-head showers
- No every-use shower cleaner

Bathroom

- Only urine, feces, soap, toilet paper and limited amounts of cleaner should go down the drain
- No feminine products, prophylactics, cigarette butts, etc.
- No every-flush toilet bowl sanitizers
- Bath and body oils
 - Increases fats, oils and grease
 - If usage is great, may need more maintenance



Septic Safe?

Toilet Paper

- Excessive use results in faster sludge build up
- Treated toilet paper (with lotions) prevents paper from settling
- Wet wipe disposal is discouraged



Prescription Drugs and Antibiotics

- Can kill microbes living in system
 - Won't discriminate helpful organisms living in the system
- Additional treatment components may be necessary
- Increase maintenance
- Do not pour unused medicines down the drain



Septic System Additives

- **Not** been proven to be beneficial to system performance
- **Not recommended**
- Breaks up particles that are settled at the bottom and may suspend them
- Suspended solids may load to downstream components



Cleaning Products

- Cumulative effects on system performance
- Look at labels!
 - DANGER: means the chemical will kill the bacteria, and its use should be minimized or eliminated
 - WARNING: means limited use should have a minimal impact on the system.
 - CAUTION: typically means the product will have little effect.

including acrylic, fiberglass and vinyl. **Not recommended for use on unpainted wood.**

PRECAUTIONARY STATEMENTS: HAZARDS TO HUMANS AND DOMESTIC ANIMALS

CAUTION: Causes moderate eye irritation. Avoid contact with eyes or clothing. **EYES:** Hold eye open and rinse slowly and gently with water for 15–20 minutes. Remove contact lenses, if present, after the first 5 minutes, then continue rinsing eye. Call a poison control center for treatment advice. Have the product container or label with you when calling a poison control center or doctor or going for treatment. **PHYSICAL AND CHEMICAL HAZARDS:** This product contains bleach. Do not use or mix this product with other household chemicals such as ammonia, toilet bowl cleaners, rust removers or acids as this releases hazardous gases.

inches from surface until thoroughly wet. Let stand 30 seconds. Rinse or wipe clean. Use product only on non-porous, non-metallic surfaces.

PRECAUTIONARY STATEMENTS: HAZARDS TO HUMANS AND DOMESTIC ANIMALS. WARNING: EYE AND SKIN IRRITANT. Vapors may irritate. Harmful if swallowed. Do not get in eyes or on clothing. For sensitive skin or prolonged use, wear gloves. Avoid prolonged breathing or vapors. Use only in well-ventilated areas. **Not recommended for use by persons with heart conditions or chronic respiratory problems such as asthma, emphysema or obstructive lung disease.** **FIRST AID: IF IN EYES:** Hold eye open and rinse slowly and gently with water for 15–20 minutes. Remove contact lenses, if present, after the first 5 minutes, then continue rinsing eye. **IF ON SKIN OR CLOTHING:** Take off contaminated clothing. Rinse skin immediately with plenty of water for 15–20 minutes. **IF BREATHING IS AFFECTED:** Move person to fresh air. If person is not breathing, call 911 or an ambulance, then give artificial respiration, preferably mouth-to-mouth if possible. **IF SWALLOWED:** Call a poison control center or doctor immediately for treatment advice. Have person sip a glassful of water if able to swallow. Do not induce vomiting unless told to do so by a poison control center or doctor. Do not give anything by mouth to an unconscious person. Call a poison control center or doctor for further treatment advice. Have the product container or label with you when calling a poison control center or doctor or going for treatment. **PHYSICAL AND CHEMICAL HAZARDS:** This product contains bleach. Do not use or mix this product with other household chemicals such as ammonia, toilet bowl cleaners, rust removers or acids as this releases hazardous gases.

Drain Cleaner

- Toxic drain cleaners can impact ability to properly treat wastewater
- Affect bacteria activity



OPERATION AND MAINTENANCE OF SEPTIC SYSTEMS

Gases and Chemicals of Concern

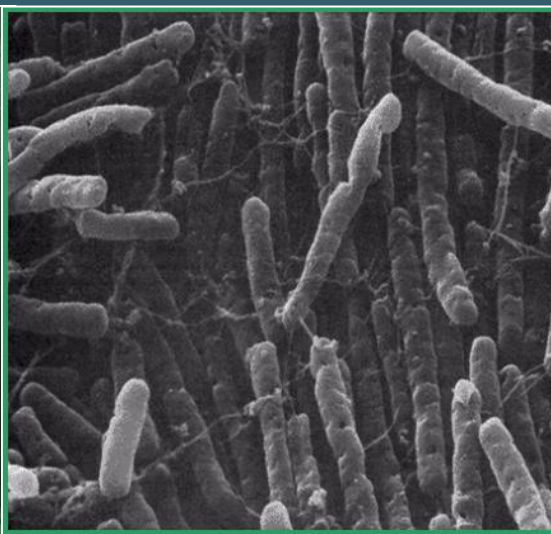
- Hydrogen sulfide
- Sulfuric acid
(converted from H₂S)
- Chlorine gas
- CO(X)s
 - Carbon dioxide
 - Carbon monoxide
- Methane



Common Biological Hazards Near Site



- Kids
- Pets
- Insects
- Snakes
- Vegetation



Restricting Access



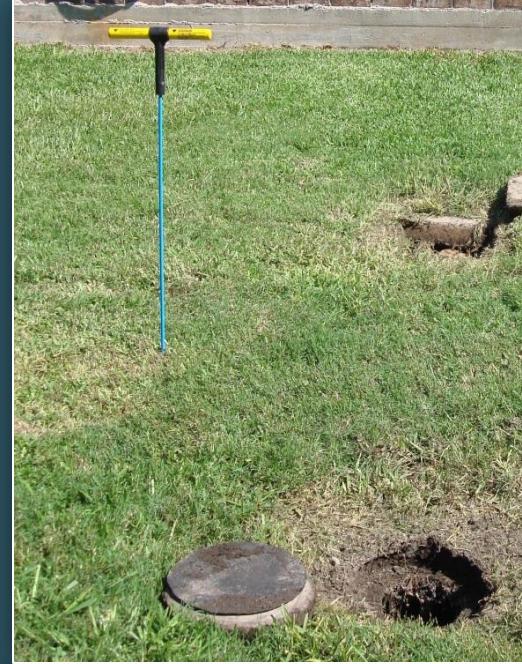
Accessibility Issues

Accessibility = ease of maintenance

- Depth of installation
- Inspection ports and risers
- Encroachment



Conditions at the Tank

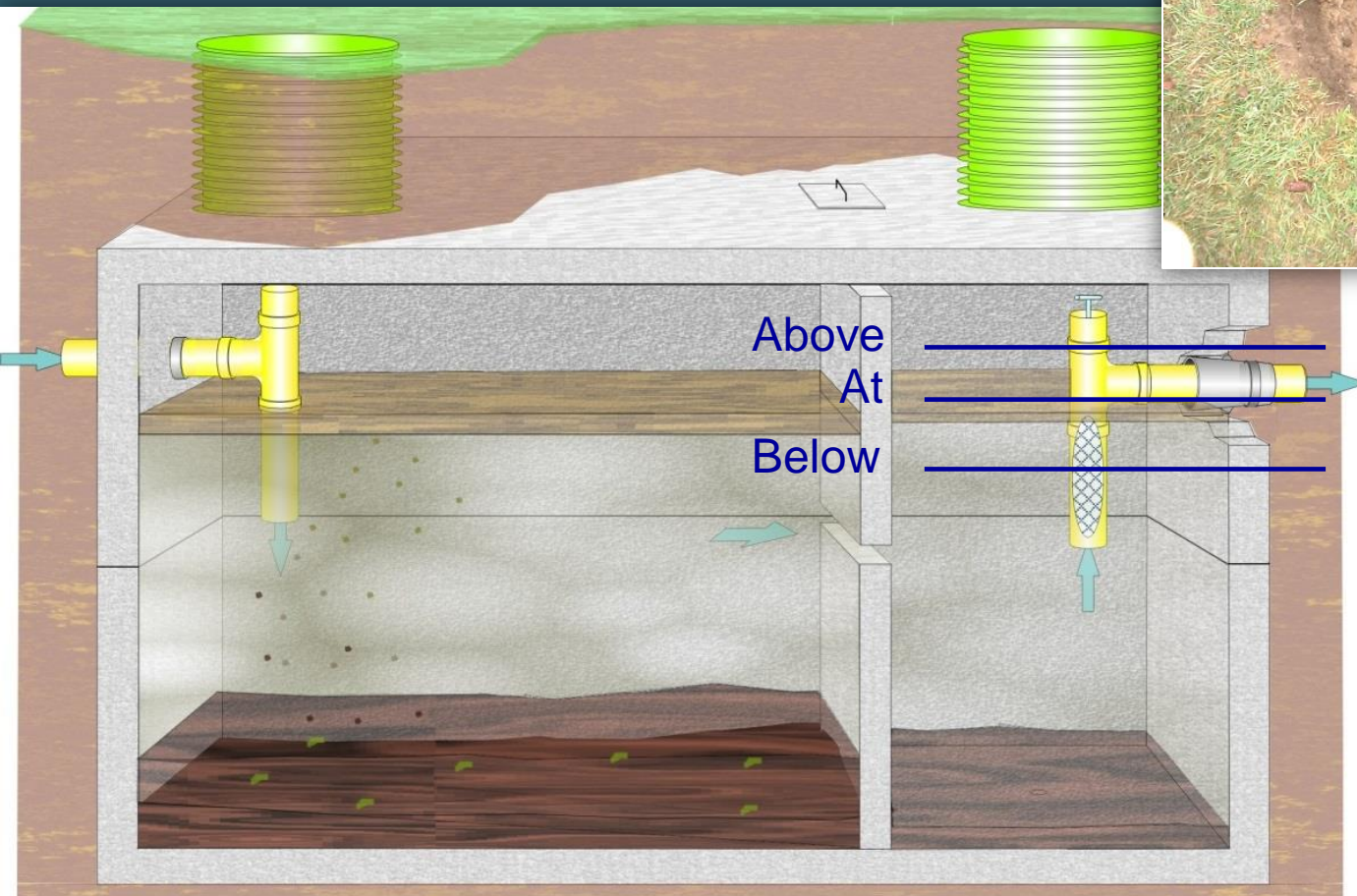


Odors?

Operating Condition

Liquid level with respect to outlet
(inches):

- At, above and below



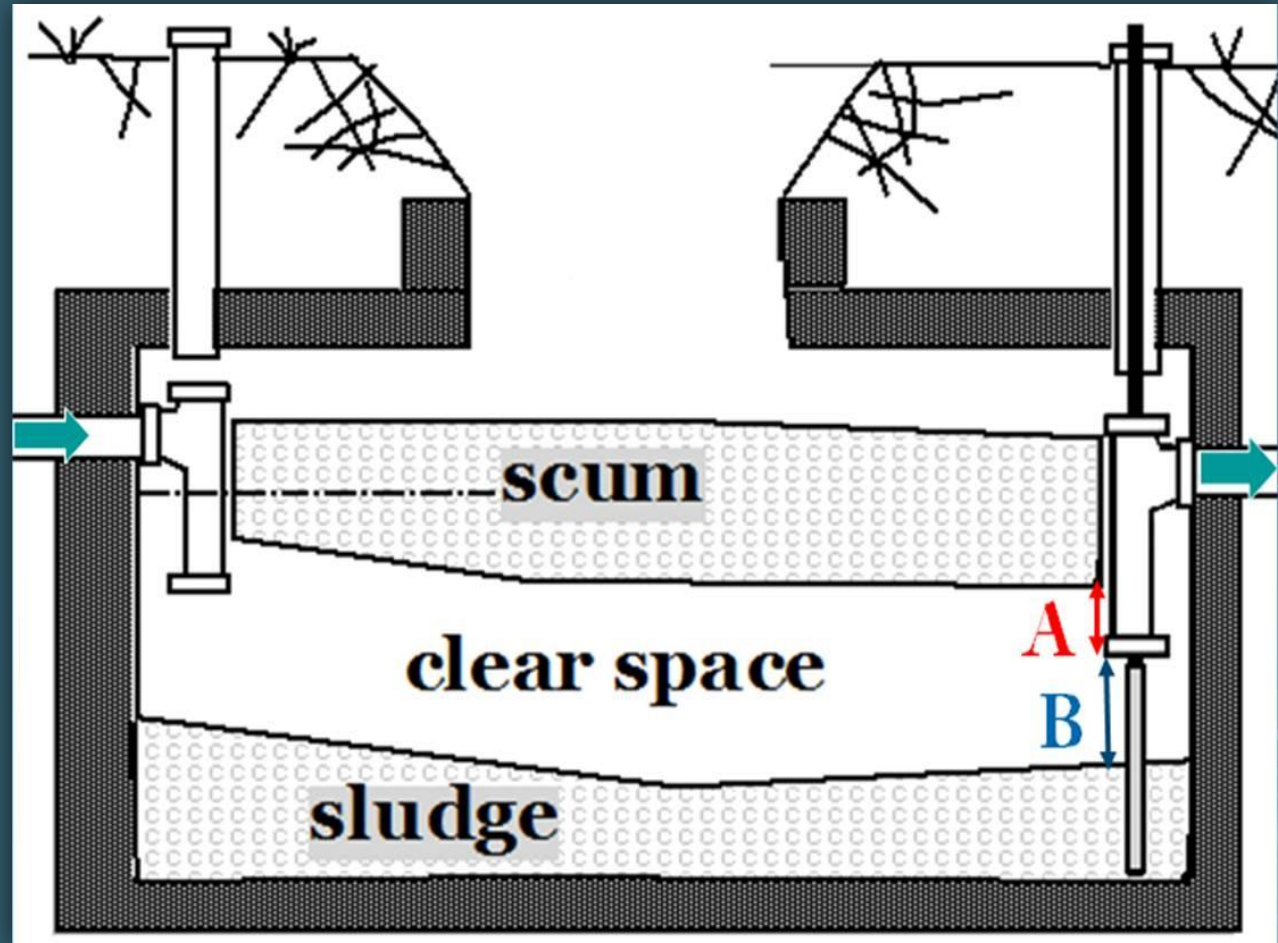
Pumping

- Removal of septage from a wastewater treatment system component
- Necessary to prevent accumulated solids from moving into downstream components
 - Drain fields
 - Pumps
- TCEQ Registered Sludge Transporter



Septic Tank Pumping Recommended?

- Should be pumped when total solids reach 25-33% of tank capacity
 - If 'A' is less than 3"
 - If 'B' is less than 12"
- Typically required every 3 to 5 years
- Pump during dry seasons to reduce the risk of tank floatation



Measuring Solids



Scum Layer

Clear Layer

Sludge Layer



??

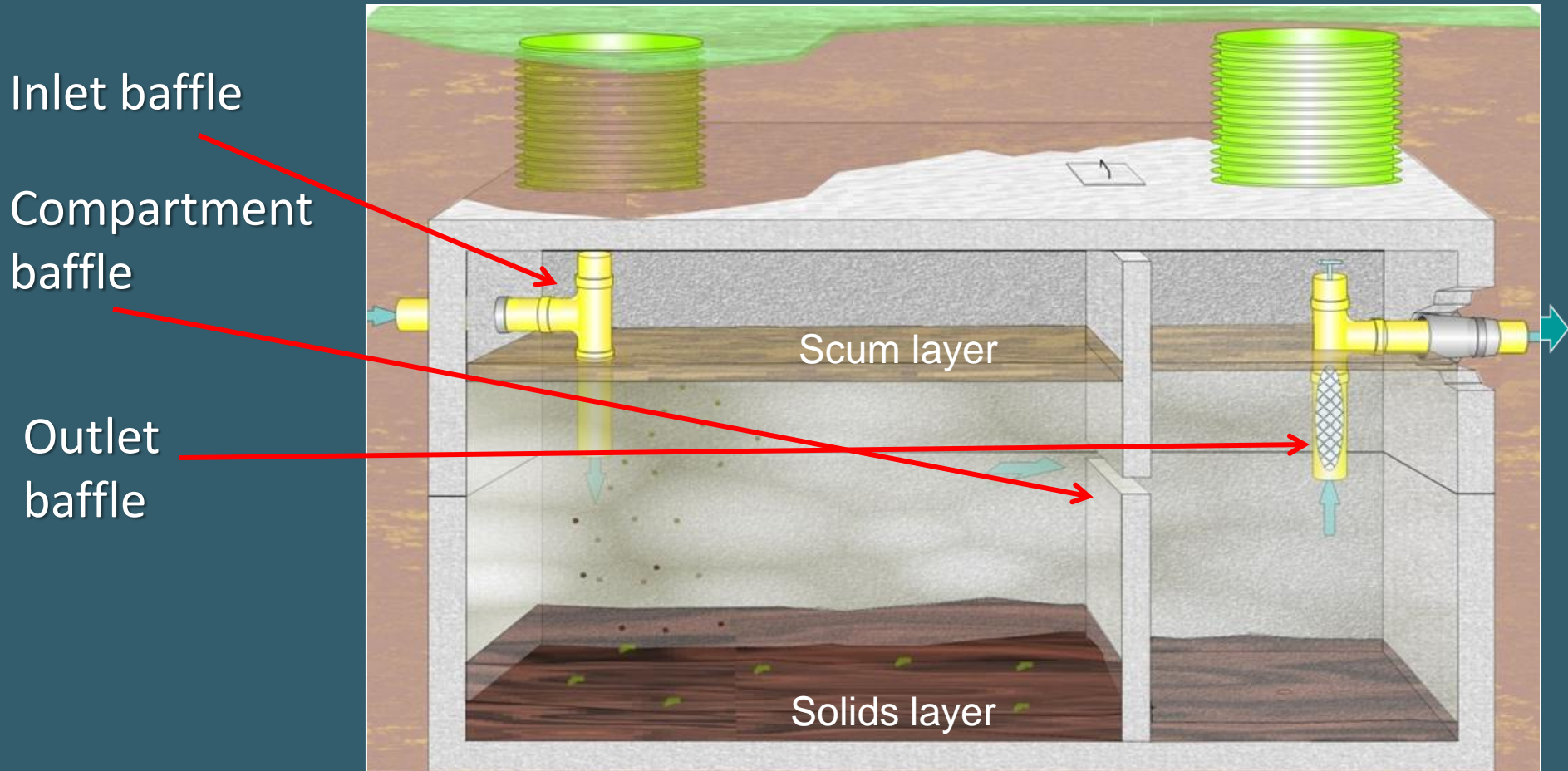
Septic Tank Pumping Recommended?

Tank Size (gals)	Household Size (Number of People)									
	1	2	3	4	5	6	7	8	9	10
500	5.8	2.6	1.5	1.0	0.7	0.4	0.3	0.2	0.1	—
750	9.1	4.2	2.6	1.8	1.3	1.0	0.7	0.6	0.4	0.3
1,000	12.4	5.9	3.7	2.6	2.0	1.5	1.2	1.0	0.8	0.7
1,250		7.5	4.8	3.4	2.6	2.0	1.7	1.4	1.2	1.0
1,500		9.1	5.9	4.2	3.3	2.6	2.1	1.8	1.5	1.3
1,750			6.9	5.0	3.9	3.1	2.6	2.2	1.9	1.6
2,000			8.0	5.9	4.5	3.7	3.1	2.6	2.2	2.0
2,250				6.7	5.2	4.2	3.5	3.0	2.6	2.3
2,500					5.9	4.8	4.0	4.0	3.0	2.6

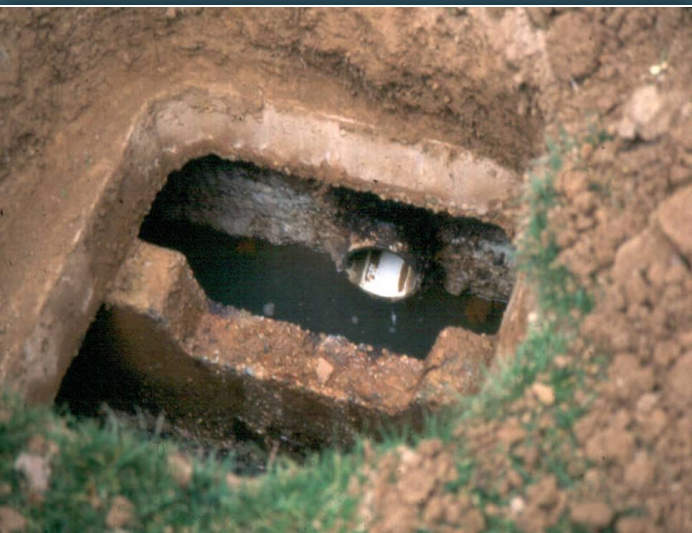
Note: More frequent pumping needed if a garbage disposal is used.

Baffles

- Critical to retention of solids in the septic tank
- Determine if baffles are in place



Baffles



- Concrete
- Plastic
- Fiberglass
- PVC tee



Effluent Screens

- Installed at the septic tank outlet
- Trap solids trying to leave the septic tank
- Protect the drainfield
- Screen is washed off directly into the inlet side of the septic tank



Tank Structural Condition

- Watertight (no visual leaks)
- Rebar exposed
- Root intrusion
- Corrosion or spalling present
- Cracks or Flex



Why Perform Maintenance?

- Keep systems functioning properly
- Maintain effluent quality
- Early detection of problems
- Public health
- Environmental protection
- System reliability



Early plumbers



Questions?



On-Site Sewage Facility
Website:
ossf.tamu.edu

